

Colette  
PATTERNS

1025  
MOD-IFIED  
LAUREL



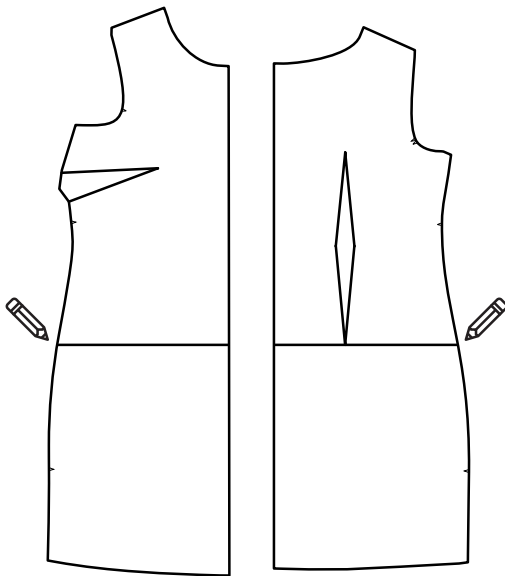
# INSTRUCTIONS



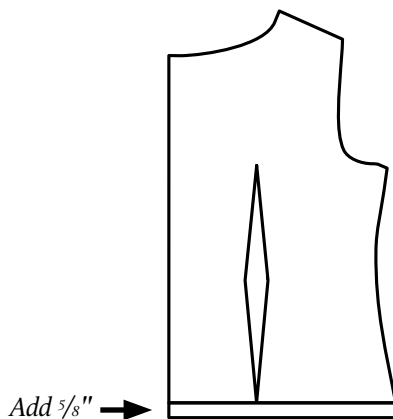
## YOU WILL NEED:

- *Laurel pattern, by Colette Patterns*
- *Large paper for tracing*
- *Clear tape*
- *Pencil or pen*
- *Ruler*

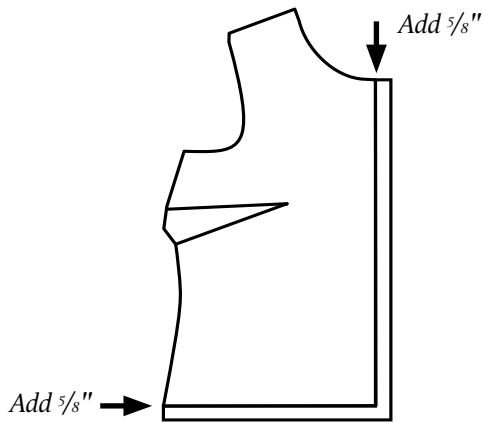
## HOW TO SEW



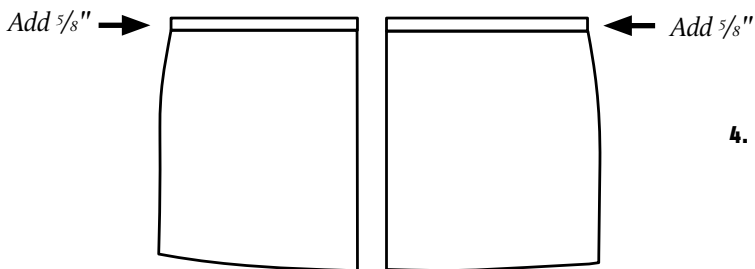
1. On the dress back, draw a horizontal line along the hips, just under where the back dart ends. Draw a corresponding line on the dress front. Walk them together at the side seam to make sure that the lines match up.



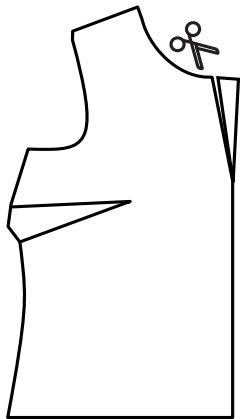
2. Trace the top portion of the dress back onto separate paper, adding  $\frac{5}{8}$ " seam allowance at the bottom edge.



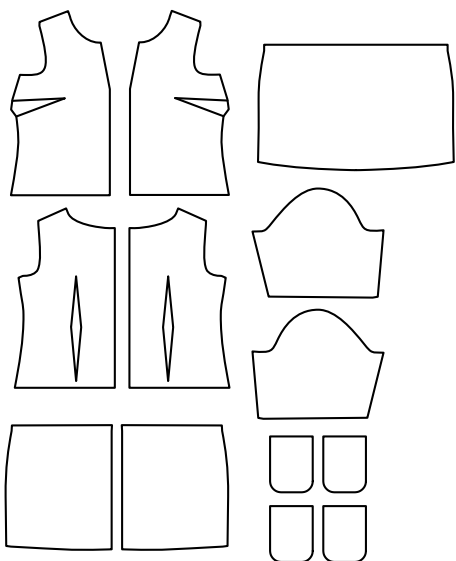
3. Trace the top portion of the dress front onto separate paper, adding  $\frac{5}{8}$ " seam allowance at the bottom edge and at the center front. The upper front dress will no longer be cut on the fold; instead, it will be cut in 2 pieces and sewn at the center front.



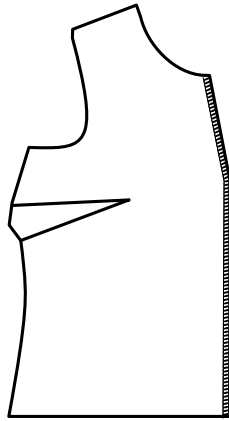
4. Trace the lower portion of the dress front and dress back pieces onto separate paper, adding  $\frac{5}{8}$ " seam allowance at the top edge of each.



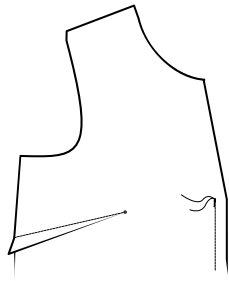
5. To create the neckline divet, mark a point along the center front that is 5 inches from the neckline. Mark another point along the neckline that is 1 inch from the center front. Draw a diagonal line between these two points and trim pattern.



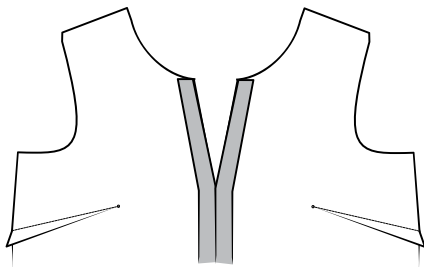
6. Cut all your pattern pieces from your fabric. Remember to cut 2 of the upper dress front rather than cutting it on the fold as the pattern originally instructs.
7. Cut 4 of the pocket pieces.



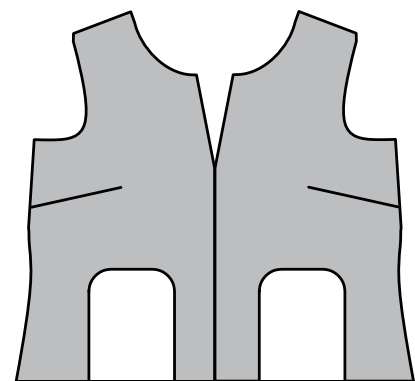
8. Finish the center front edges of each of the upper dress front pieces separately. This seam must be pressed open, so it's important to finish the edges before stitching them together. To finish, use a serger, or the zigzag or mock overlock stitch on your sewing machine.
9. Sew and press all darts on the dress front and back, as instructed in the pattern.



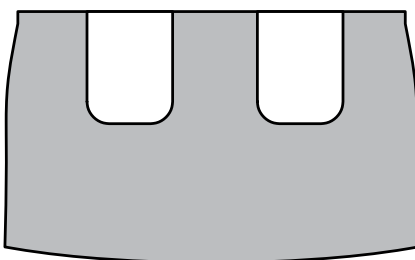
10. With right sides together, stitch the upper bodice front pieces together at the center front. Stop when you reach the point the divet begins and backstitch to secure.

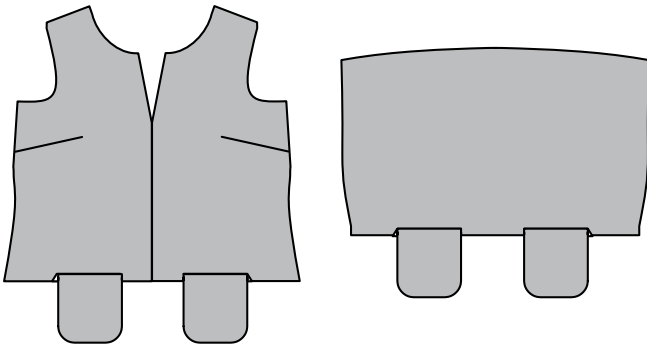


11. Press seam open. Press the edges of the divet opening toward the wrong side. These folds will be secured down when the neckline is finished with bias tape later.

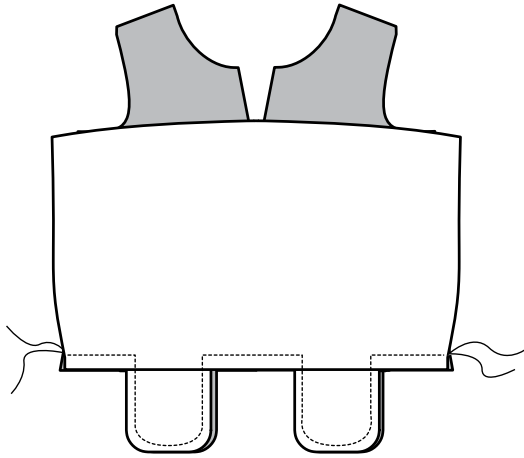


12. Mark the pocket placement on the upper dress front and lower dress front pieces. Place the pockets about 2 1/2 inches from the center on each side. Make sure the placement is the same on the upper and lower dress front.





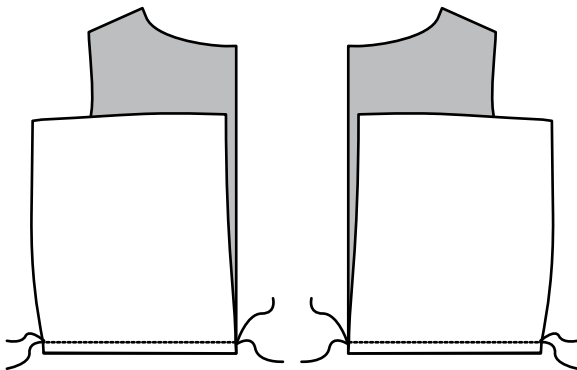
- 13.** Stitch each of the four pockets in place along the upper dress front and lower dress front. Press pockets away from pieces.



- 14.** Stitch the upper dress front to the lower dress front. Begin stitching along the seam, pivoting when you reach  $\frac{5}{8}$ " beyond the first pocket edge. Stitch around the pocket, continue along the seam, stitch around the second pocket, and stitch the final length of seam.

- 15.** Stitch each upper dress back to the lower dress back pieces along the hip seam.

- 16.** You are now ready to complete the garment! Follow the instructions in the rest of the [Laurel pattern](#) to finish sewing your dress.



#### FINISHING THE NECKLINE

Be sure to leave the divet edges folded and pressed under when attaching the bias tape. Finish the edges of the bias tape just as you do for the center back.